



**BILLET DUAL FUEL FILTER HEAD  
AND FUEL PUMP MOUNT KIT**  
(Dual Pumps or Single Fuelab Prodigy Pump)



**INSTALLATION GUIDE**



**INSPECT CONTENTS OF THIS KIT  
THOROUGHLY **BEFORE** STARTING  
THE INSTALLATION PROCESS!**

**IF YOU FIND A PROBLEM WITH YOUR PACKAGE:**

- **KEEP ALL OF THE PARTS & PACKAGING TOGETHER**
- **DO **NOT** ATTEMPT INSTALLATION OF THE PRODUCT**
- **PROMPTLY NOTIFY YOUR SELLING DEALER**
- **PROVIDE DEALER WITH PHOTOGRAPHS IF REQ'D\***
- **WAIT FOR FURTHER INSTRUCTIONS FROM DEALER**

**\*WE RESERVE THE RIGHT TO REQUEST  
PHOTOGRAPHS OF PACKAGING OR PARTS  
IN ORDER TO PROPERLY ADDRESS ANY  
SITUATION INVOLVING EITHER DAMAGED  
OR MISSING ITEMS.**

# Kit Contents

To familiarize yourself with the different components that make up the kit, make sure that the following parts are present:

<u>Qty:</u>	<u>Part Number:</u>	<u>Description:</u>
1	COMP-PUMP-BRACKET-V5	Stainless Steel Fuel Pump Bracket and Powder Coated Back Plate
2	DD-BFFH	Driven Diesel Billet Fuel Filter Head w/Plugs
4	1/4-20x3/4" Bolts	1/4-20x3/4" Bolts (not shown in photo)
5	1/4-20x1.25" Bolts	1/4-20 x 1.25" Bolts
14	1/4" Flat Washers	1/4" SAE Flat Washers
9	1/4" Nylok Nuts	1/4" Nylon Locking Nuts
4	5/16" Flat Washers	5/16" Grade 8 Flat Washers
4	5/16-18 Nylok Nuts	5/16-18 Grade 8 Nylon Locking Nuts
3	3/8-16x1" Bolts	3/8-16 x 1" Bolts
6	3/8" Flat Washers	3/8" Grade 8 Flat Washers
3	3/8-16 Nylok Nuts	3/8-16 Grade 8 Nylon Locking Nuts

**T**hank you for purchasing the Driven Diesel Dual Billet Filter Head with Mount Kit. Your kit should have the above-mentioned items for your installation. Please read and familiarize yourself with this manual fully before proceeding with the installation of the kit.

**IMPORTANT NOTE :** This is a “universal” kit, intended for our “do-it-yourself” customer base. As such, the instructions provided are very basic and pertain specifically to the proper use of the items included in the kit. Post sale customer support for this product is limited to ensuring that all of the included components are present, and working as intended. **Driven Diesel does not have the manpower to offer system design and troubleshooting services for this product line. If you need this level of support, we recommend purchasing a complete Driven Diesel fuel system kit.**

Customers that are using this product to build a system “similar to” those offered by Driven Diesel are free to download the full PDF instruction documents for those kits, as well as use the technical support and design articles we have posted online.

While this filter head was originally designed for use as a diesel fuel filter, using the Baldwin BF1212, BF1252 and BF7633 filters, there are other filters that will fit. The head uses a 1”-14 thread pitch nipple, and is compatible with either the G381-A or G401 gasket spec from Baldwin. We can’t help you with filter selection outside of what we have tested and have direct knowledge about, but any filter that could be used with a Baldwin FB1311 or WIX 4770 filter head will work with this one.

The included bracket was originally intended for use in Ford trucks and vans ranging from 1994 through 2007 model years, but the design is “Universal” and should fit any vehicle with enough clearance from the bottom of the frame to the underside of the body (7-1/2”). If the clearance is close, spacers can be added between the bracket and the frame to gain clearance to the floor.

The bracket was also designed to accommodate either (2) Bosch OEM fuel pumps (plumbed in parallel), (1 or 2) Bosch Motorsports fuel pumps or (1) Fuelab Prodigy fuel pump. The preinstalled studs work with insulated band clamps (DD-PUMPCLAMPKIT...not included) for mounting either 1 or 2 of the Bosch style fuel pumps. For the Fuelab Prodigy pump, there are (4) additional 3/4" long bolts that are used in the (4) holes in the mounting plate, in conjunction with the mounting clamps that are included with the Fuelab pump.

**NOTE:** Test Fit the mounting bracket to determine the desired mounting location (inside or outside the frame rail). The pictures and text of these instructions assume the bracket will be mounted **INSIDE** the frame rail, forward of the fuel tank. If you will be mounting this bracket **OUTSIDE** the frame, you will need to reverse the orientation of the fuel pump and pay close attention to the IN/OUT flow markings on the filter heads to make sure fuel is flowing through the filters properly.

Since this kit is offered as a “DIY” product, and we are unaware of the remaining components that you will be using with it, the following instructions relate **ONLY** to mounting the filter heads to the bracket, and mounting the bracket to the vehicle. The included images showing pumps and plumbing are provided only as a reference to help guide you. You **MUST** pay attention to the mounting location of your filters, flow direction and in/out ports on the filter heads, etc.

## **INSTALLATION**

### **PREPARING THE FUEL PUMP AND FILTER BRACKET ASSEMBLY FOR INSTALLATION**

**Using Figures 1-4 as a guide**, assemble the pump/filter bracket per the following steps.

1. Install Fuel Pump(s) onto the Bracket First (easier with the filters out of the way)
2. Install the (2) DD-BFFH Filter Heads to the bracket using the (5) ¼-20 x 1¼” bolts, (10) Flat Washers and (5) ¼-20 Nylok Nuts.
3. Complete the Pump to Filter Plumbing as needed for your specific installation.

**BEFORE YOU PROCEED**, it is best to **CONFIRM** that the system will fit in your chosen installation location (now that it is assembled).

**IMPORTANT NOTES:** The “L” Bracket has slots where the mounting bolts go, so it can be positioned on either side of the frame, and moved in and out from the face of the frame to achieve the best fit in each vehicle. The Pump/Filter Bracket is also slotted where it attaches to the “L” Bracket, so that it can be raised or lowered to achieve the best fit/clearance to the floor.

**Outside the frame mounting will require disconnecting and routing the e-brake cable either through the filter bracket or behind the “L” bracket. Sleeving the e-brake cable with some split hose so it doesn’t rub on the fuel system components is advised.**

### **SEE PICTURES AND NOTES ON PAGE 12 FOR BRACKET MOUNTING OPTIONS**

4. Take the assembled Pump/Filter Bracket & the black “L” Bracket under the truck. Using a large C-Clamp, secure the “L” Bracket to the bottom of the frame in your chosen location. You can now install the Pump/Filter Bracket over the (4) mounting studs on the “L” Bracket and check for clearance all the way around the assembly. Adjust the position of the “L” Bracket on the frame, as well as the position of the Pump/Filter Bracket on the “L” Bracket until you are happy with the chosen mounting location. This process allows you to easily move the assembly around on the frame by simply loosening and retightening the the C-Clamp.

5. Before you remove the C-Clamp, using the (3) slots on the bottom of the “L” bracket, mark the location for the (3) 3/8” holes that need to be drilled, ideally as close to the middle of the bottom of the frame as possible. Then, remove the C-Clamp and Bracket.
6. Center punch the 3 bracket holes, then drill them in several steps. We have found that a good “Step Bit” works the best. Just be mindful of any wiring harnesses or tubing that may be on the other side while drilling. It is possible to drill the holes with the “L” Bracket clamped in place (using it as a guide), just keep in mind that the drill bit may damage the powdercoat and the bracket may start to rust as a result.
7. Once the holes are drilled, install the “L” Bracket to the frame using the (3) 3/8-16 Grade 8 Bolts, (6) 3/8” Grade 8 Flat Washers and (3) 3/8-16 Grade 8 Nylok Nuts. We prefer to install the bolts pointing up from the bottom and have the nuts on the top for a better look, but you MUST make sure that the bolts are not sticking up into anything they could damage over time (wiring harness, brake line, etc). Installing the bolts pointing down may be safer in some locations.
8. Install the Pump/Filter Bracket to the “L” Bracket using the (4) 5/16 Grade 8 Flat Washers and (4) 5/16-18 Grade 8 Nylok Nuts.

### **ALMOST THERE...**

9. Always pre-fill both fuel filters before installing them onto the filter heads.
10. For the pre-filter, if included, install the small rubber o-ring from the filter package onto the filter head nipple (closest to the fuel tank), then install the filter onto the filter head. The post-filter does not include/need the smaller o-ring, simply install it on the filter head closest to the engine. It is a good idea to lubricate the rubber seal on the filters.
11. Once you have finished, test the system by turning the ignition key to the “ON” position, but do not start the engine yet. While the fuel pump is running, check the lines for any signs of leakage. Resolve any leaks before continuing. Cycle the key from “off” to “on” several times, waiting about 20 seconds each time. This will allow the pump to prime and purge any air in the system and completely fill the filters.
12. If you have a fuel system with an adjustable regulator, check and adjust (if needed) the pressure at the regulator per the fuel system instructions before proceeding.
13. Once you have confirmed that the system is leak free, go ahead and start the engine.

**FUEL FILTER CHANGE INTERVALS:** We recommend that ALL fuel filters be replaced every 15,000 miles, or every 12 months, whichever comes first. It's just good for the pump and injectors!



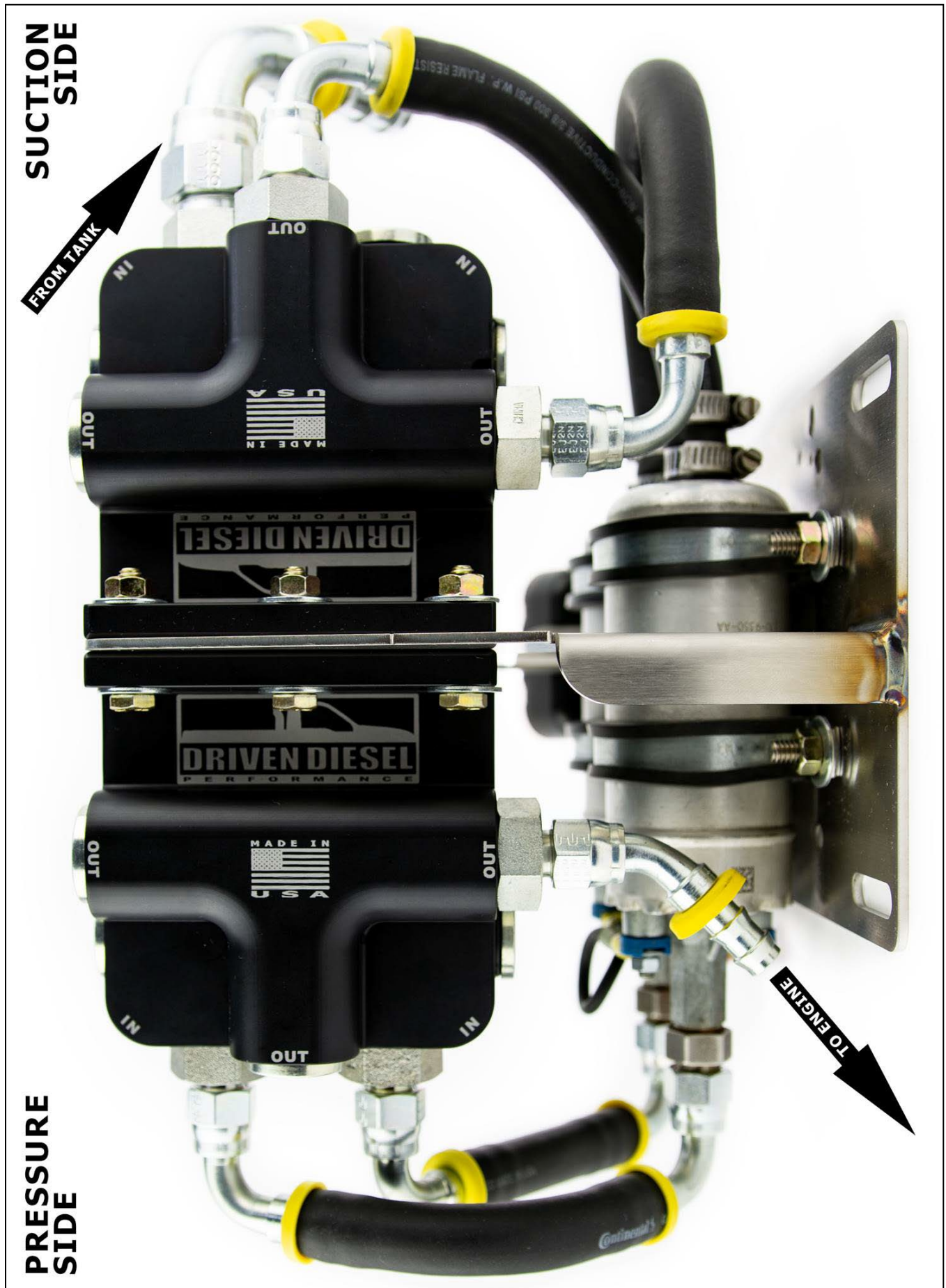


Figure 1 – Top View Of Dual Pump/Filter Assembly – “Inside the Frame” Orientation

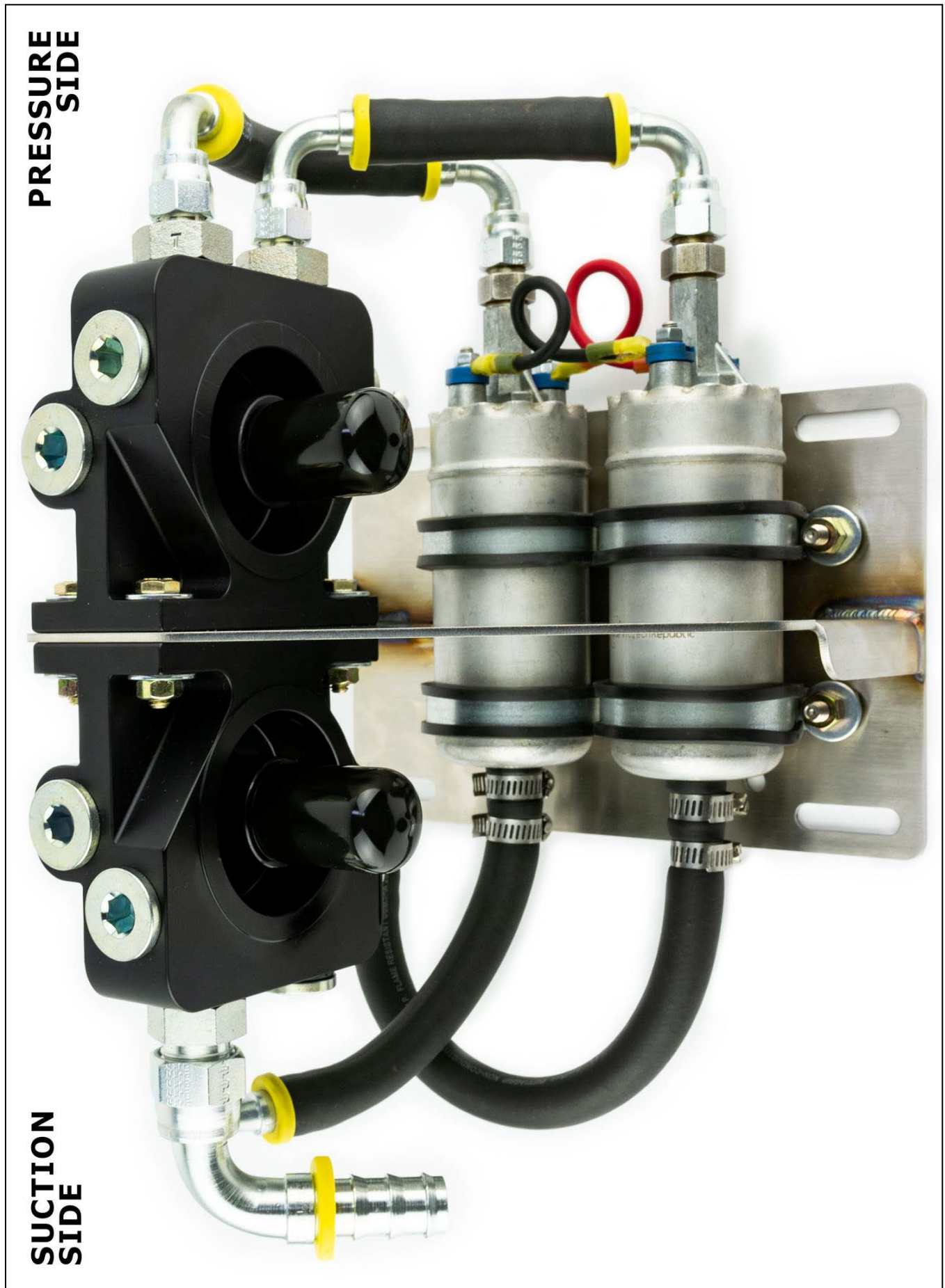


Figure 2 – Dual Pump Inlet on Left – Outlet on Right – “Inside the Frame” Orientation





Figure 3 – Dual Pump Inlet View – “Inside the Frame” Orientation

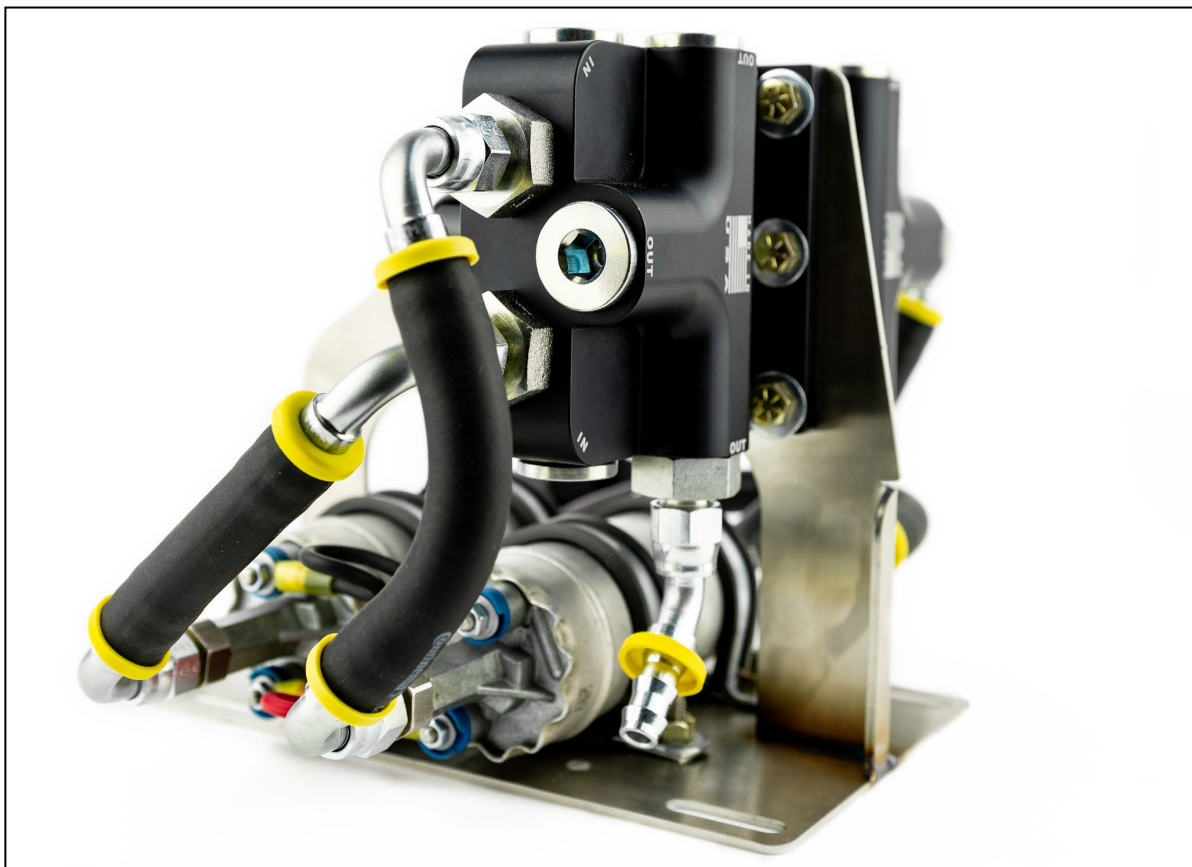


Figure 4 – Dual Pump Outlet View – “Inside the Frame” Orientation



**SUCTION  
SIDE**

**PRESSURE  
SIDE**

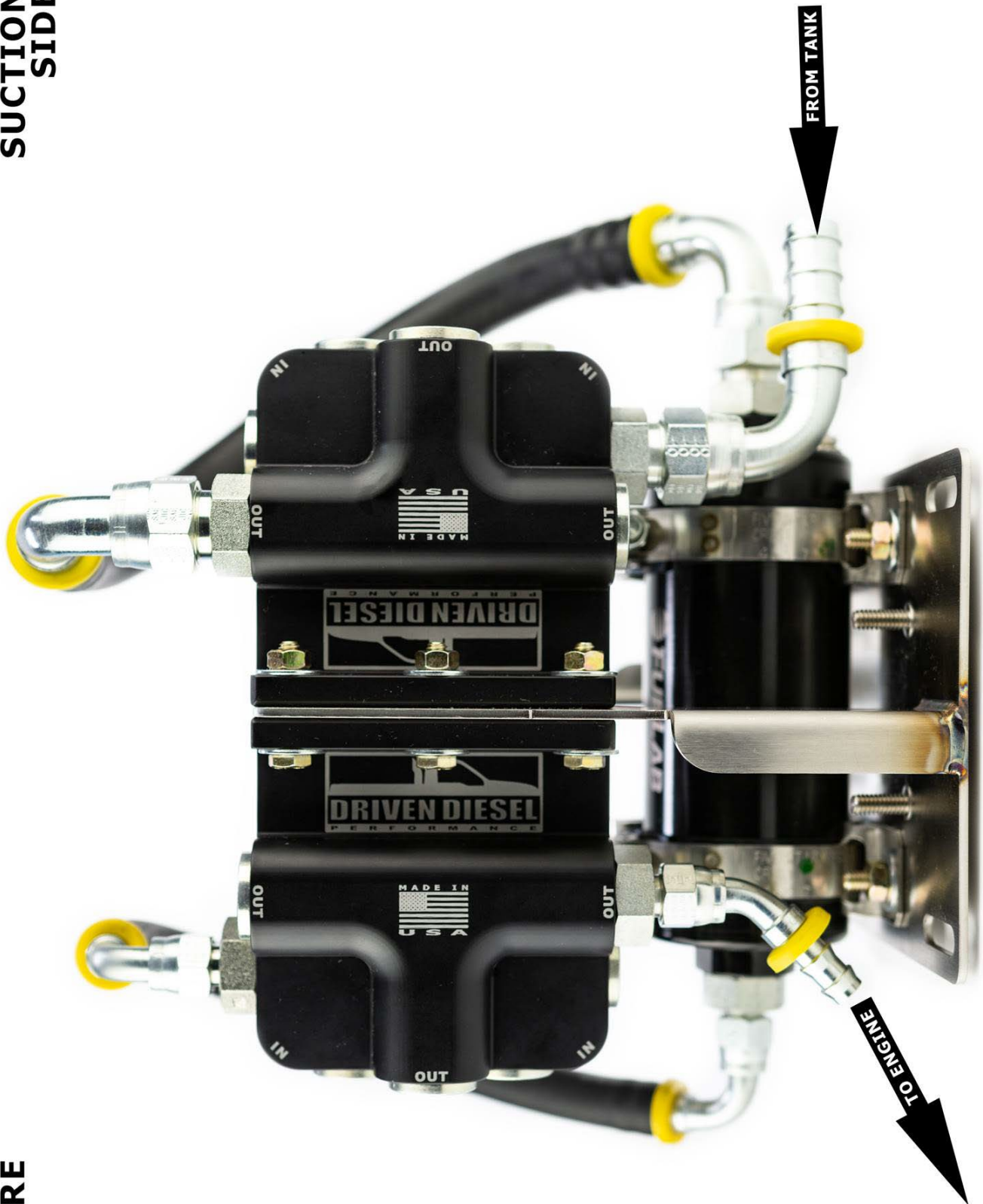


Figure 5 – Top View Of Fuelab Pump/Filter Assembly – “Inside the Frame” Orientation

**PRESSURE  
SIDE**

**SUCTION  
SIDE**

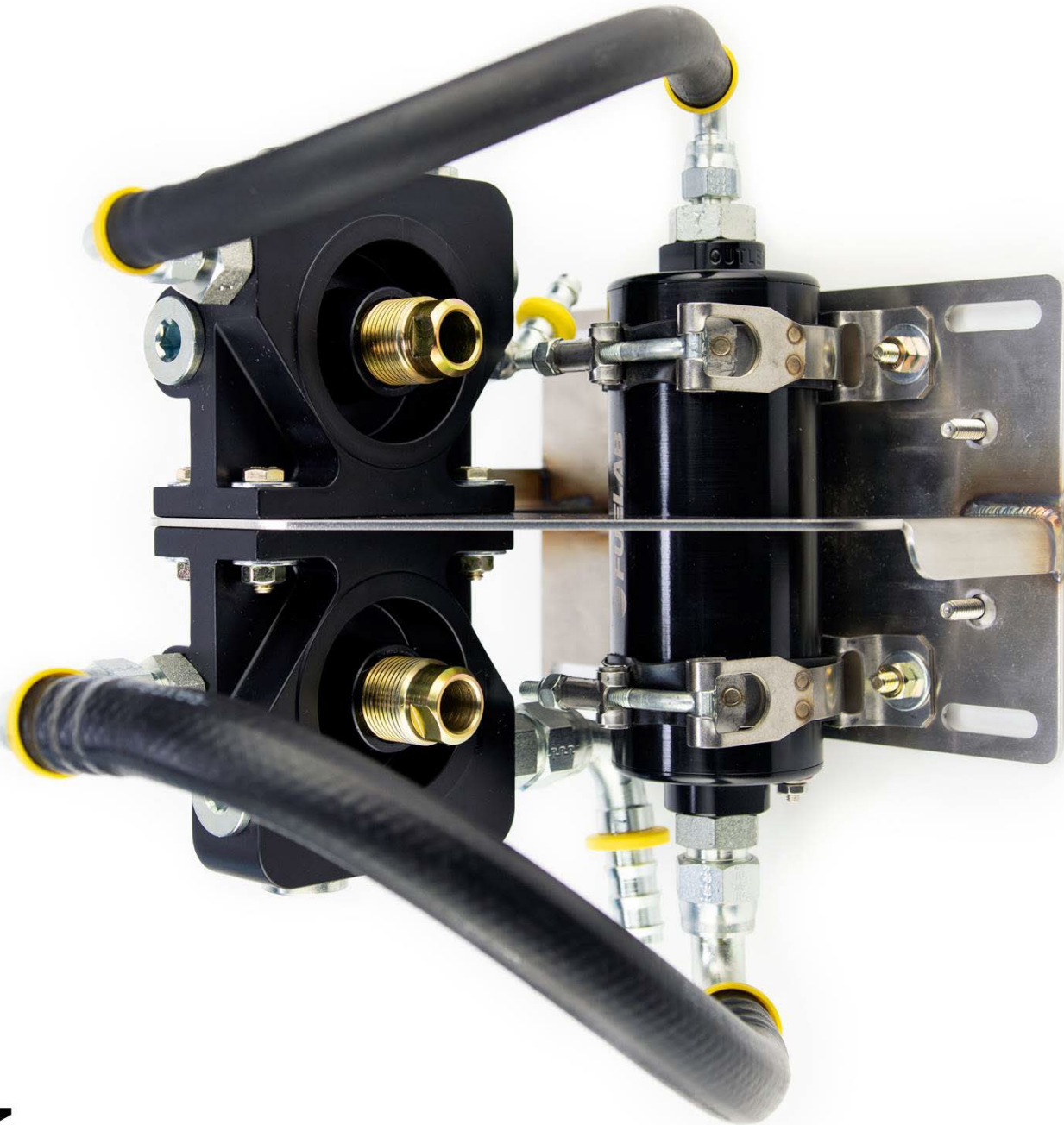


Figure 6 – Fuelab Pump Inlet on Left – Outlet on Right – “Inside the Frame” Orientation

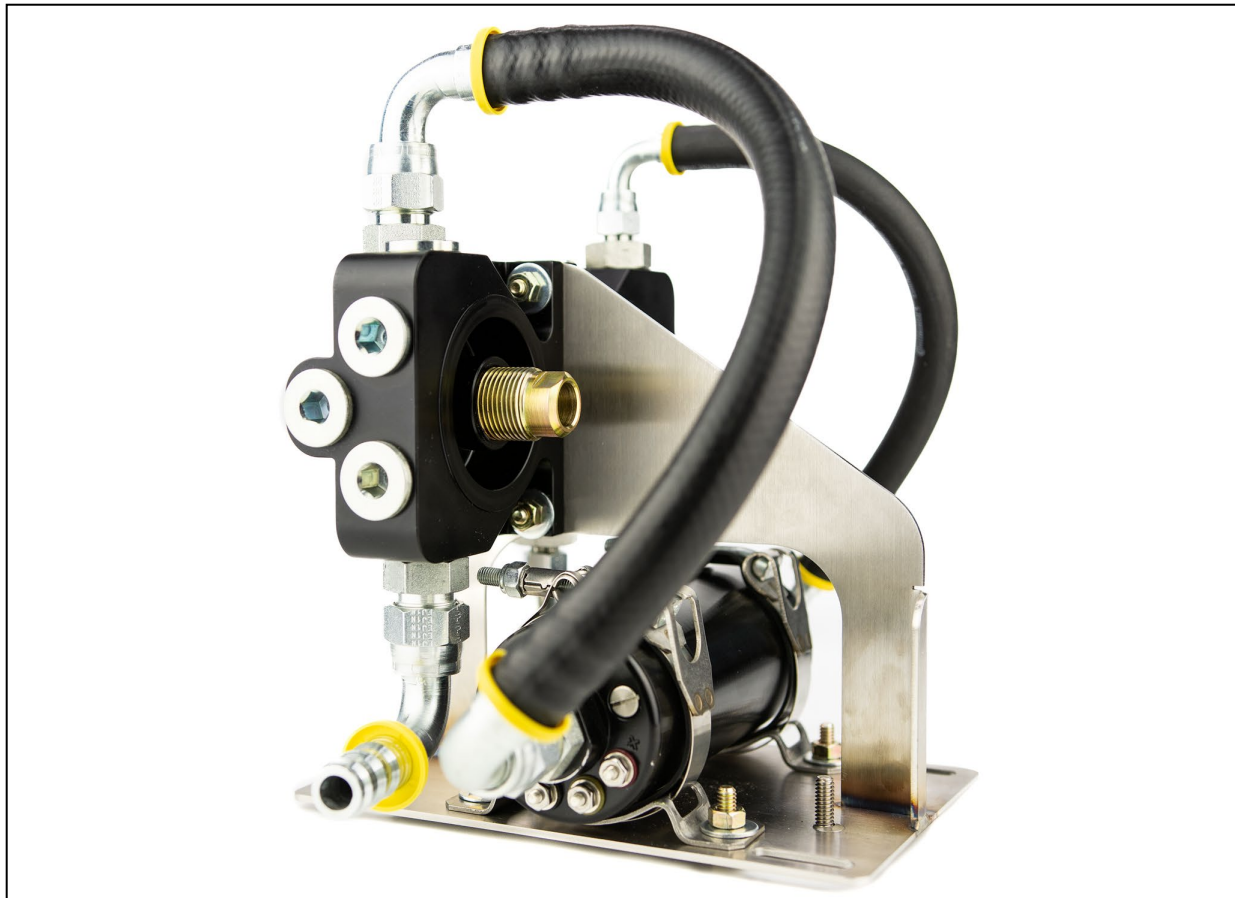


Figure 7 – Fuelab Pump Inlet View – “Inside the Frame” Orientation

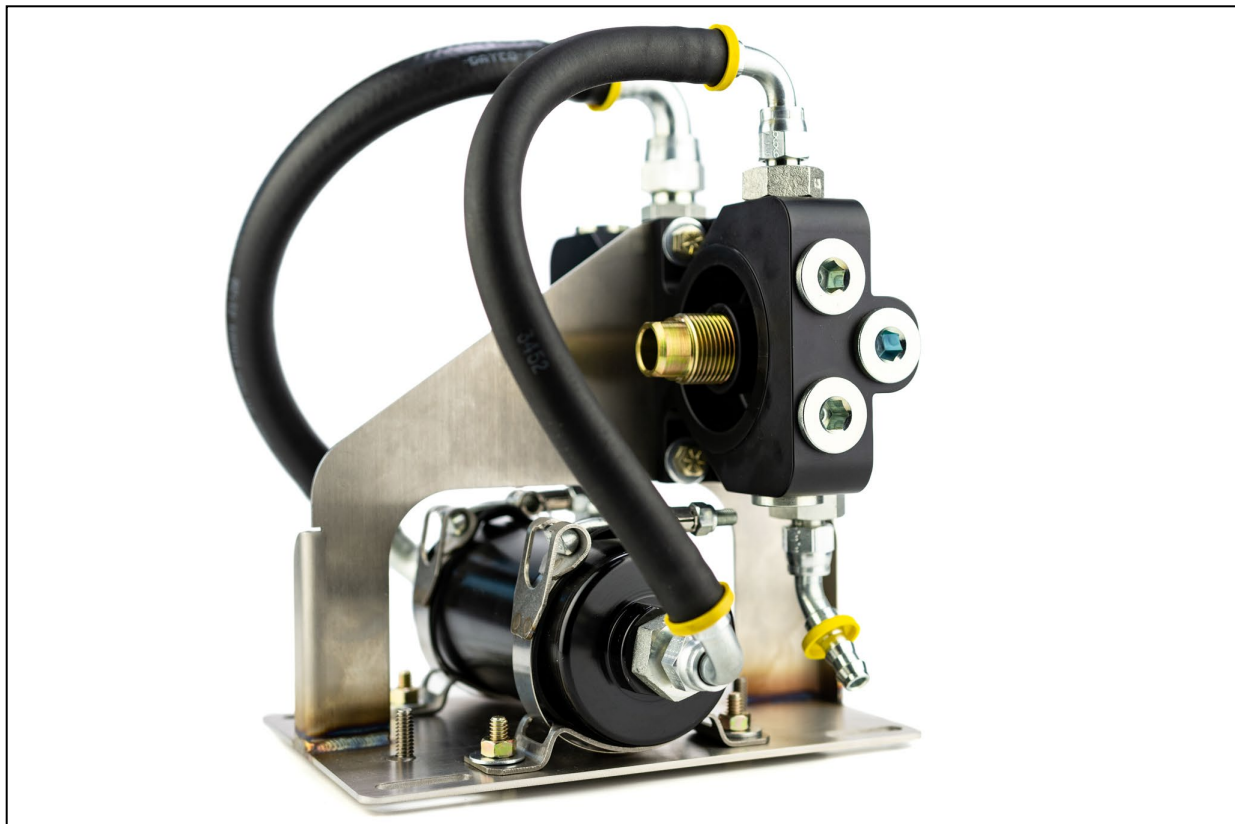
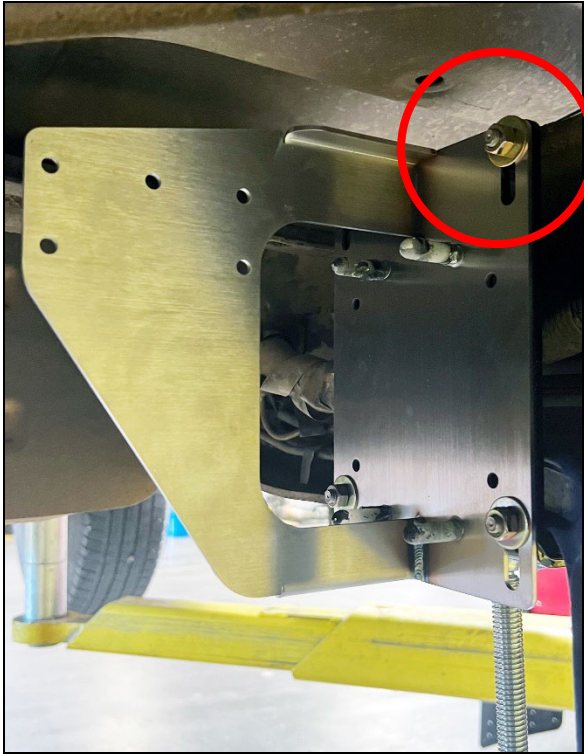


Figure 8 – Fuelab Pump Outlet View – “Inside the Frame” Orientation



The pictures below show the different ways the mounting bracket can be configured. Use these images to find the best overall install location and configuration for your truck before drilling the mounting holes. You can test fit the "L" bracket with a C-Clamp (as shown) in a number of positions inside and outside the frame. You can also use the slots in the bottom of the "L" bracket to adjust how close it fits to the frame.



INSIDE / TIGHT TO FRAME / LOW POSITION



INSIDE / TIGHT TO FRAME / HIGH POSITION



OUTSIDE / TIGHT TO FRAME / LOW POSITION



INSIDE / BRACKET EXTENDED AWAY FROM FRAME

**NOTE:** E-Brake cable should run through a split hose or sleeve, and not be pinched, if behind bracket.



## S DIESEL, LLC (dba STRICTLY DIESEL AND/OR DRIVEN DIESEL\*) WARRANTY AND LIABILITY POLICY

**MOST OF THE PRODUCTS SOLD BY S DIESEL, LLC, ARE DESIGNED TO INCREASE VEHICLE PERFORMANCE...USE AT YOUR OWN RISK!**

**Do not install or use any product(s) purchased from S DIESEL, LLC ("S DIESEL") until you have carefully read the following Warranty and Liability Policy (the "Warranty").**

### PRODUCT WARRANTY POLICY

Subject to the limitations, exclusions, and qualifications set forth below, the product or the products made and sold by S DIESEL (the "S Diesel Product" or "S Diesel Products") are warranted to Buyer as set forth in this Warranty. The installation of the S Diesel Products indicates that Buyer has read, understands and agrees to the terms and conditions of this Warranty. Any warranty on products that are made by another manufacturer which are resold by S DIESEL to Buyer is made by the manufacturer of such products in accordance with and subject to all conditions and limitations of the manufacturer's warranty in effect on the date of the purchase by Buyer. S DIESEL makes no warranties to Buyer, express or implied, with respect to such products that are made by another manufacturer.

### LIMITED WARRANTY

The S Diesel Products (except S Diesel Products specified to have different warranty terms) are warranted to be free from defects in material and workmanship, under normal use and service for a period (the "Product Warranty Period") of one (1) year from date of delivery to Buyer, unless S DIESEL performs the work installing the S Diesel Products, in which case the Product Warranty Period shall be extended to equal the Service Warranty Period (as defined below under "SERVICE WARRANTY POLICY"). S DIESEL's liability under this Warranty is limited to repair or replacement at its option, subject to the provisions set forth herein, of any S Diesel Products which upon examination S DIESEL are found to be defective. Buyer shall prepay cost of transportation of defective S Diesel Products to S DIESEL for inspection.

S DIESEL shall not have any responsibility under this Warranty unless (1) the defect in an S Diesel Product results in a claim arising within the Product Warranty Period, measured from the date of delivery to Buyer, (2) the S Diesel Product, if installed by an installer other than S DIESEL, was properly installed, (3) the S Diesel Product was normally maintained and not subject to misuse, negligence or accident, and (4) the S Diesel Product, system components and/or accessories were not repaired or altered in such a way that in the judgment of S DIESEL the S Diesel Product's performance or reliability was adversely affected.

### EXCLUSIONS

Any of the above warranties by S DIESEL shall not apply if Buyer's vehicle is in an accident, misused, neglected, altered from the S Diesel Product's manufacturer original designs or specifications or serviced in connection with a warranty claim hereunder without prior written approval of S DIESEL.

### REMEDIES EXCLUSIVE

Repair or replacement of defective S Diesel Products in accordance with the Limited Warranty above shall be Buyer's exclusive remedy for and shall constitute satisfaction of any and all liabilities of S DIESEL with respect to any defect in any S Diesel Product whether based in warranty, contract, tort, negligence, strict liability or otherwise.

### DISCLAIMERS AND LIMITATIONS

**THE EXPRESS WARRANTIES SET FORTH ABOVE ARE EXCLUSIVE AND IN LIEU OF ALL OTHER WARRANTIES, CONDITIONS AND TERMS AS TO QUALITY OR FITNESS OF ALL PRODUCTS SUPPLIED BY S DIESEL TO BUYER, WHETHER WRITTEN, ORAL OR IMPLIED, STATUTORY OR OTHERWISE, INCLUDING WITHOUT LIMITATION, ANY WARRANTIES OR CONDITIONS OF MERCHANTABILITY OR FITNESS FOR A PARTICULAR PURPOSE, AND ALL SUCH OTHER WARRANTIES, CONDITIONS AND TERMS ARE HEREBY DISCLAIMED AND EXCLUDED BY S DIESEL. IN NO EVENT SHALL S DIESEL BE LIABLE FOR ANY LOSS OF ACTUAL OR ANTICIPATED PROFITS, LOSS OF ANTICIPATED BUSINESS, COST OF SUBSTITUTE PRODUCTS, LOSS OF USE OR DOWNTIME COSTS OR DELAY CLAIMS (WHETHER DIRECT OR INDIRECT) NOR FOR ANY OTHER SPECIAL, INDIRECT, INCIDENTAL OR CONSEQUENTIAL DAMAGES ARISING OUT OF OR RELATING TO THIS WARRANTY OR THE SUPPLY OF S DIESEL PRODUCTS TO BUYER, WHETHER BASED IN WARRANTY, CONTRACT, TORT, NEGLIGENCE, STRICT LIABILITY OR OTHERWISE. BUYER ACKNOWLEDGES THAT (A) THE PRODUCTS PURCHASED FROM S DIESEL WILL BE USED IN CONNECTION WITH ACTIVITIES, UNDER EXTREME CONDITIONS AND/OR SUBJECT TO MODIFICATIONS REQUESTED BY BUYER FOR WHICH THE PRODUCTS MAY OR MAY NOT BE SUITABLE; (B) THE WARRANTY OF SUCH PRODUCTS FOR PERFORMANCE IN CONNECTION WITH SUCH ACTIVITIES, UNDER SUCH EXTREME CONDITIONS AND/OR SUBJECT TO SUCH MODIFICATIONS REQUESTED BY BUYER IS NOT POSSIBLE; AND (C) ANY MANUFACTURER'S WARRANTY MAY BE VOIDED BY USE OF THE PRODUCTS IN CONNECTION WITH SUCH ACTIVITIES, UNDER SUCH EXTREME CONDITIONS AND/OR SUBJECT TO SUCH MODIFICATIONS REQUESTED BY BUYER. BUYER ACKNOWLEDGES THAT THE INSTALLATION OF ANY S DIESEL PRODUCTS THAT ARE NOT LEGAL FOR USE ON POLLUTION CONTROLLED MOTOR VEHICLES IS DONE SOLELY AT THE REQUEST OF BUYER AND ALL RESPONSIBILITY FOR ANY EFFECTS ON THE ORIGINAL VEHICLE MANUFACTURERS WARRANTY, ABILITY TO PASS ANY EMISSIONS INSPECTIONS OR FOR ANY FINES THAT MAY OCCUR DUE TO THE REMOVAL OF FEDERALLY MANDATED EMISSION CONTROL EQUIPMENT IS ON BUYER.** No employee or representative of S Diesel has the authority to make any representation, promise or agreement which in any way varies from the terms and conditions of this Warranty. No suit or claim based on any cause of action, regardless of form, arising out of or relating to this Warranty or any of the S Diesel Products supplied by S DIESEL may be brought by Buyer or anyone claiming by, through or under Buyer against S DIESEL more than one year after the date that such cause of action arose.

**IN THE EVENT BUYER DOES NOT AGREE WITH THE TERMS AND CONDITIONS OF THIS WARRANTY, BUYER MAY PROMPTLY RETURN THE PRODUCT TO S DIESEL FOR A FULL REFUND. THE PRODUCT MUST BE IN NEW, UNUSED AND RESELLABLE CONDITION, BE RECEIVED WITHIN FIFTEEN (15) DAYS OF THE ORIGINAL PURCHASE AND BE ACCOMPANIED BY A DATED PROOF OF PURCHASE (RECEIPT). PRODUCTS RETURNED IN NEW, UNUSED AND RESELLABLE CONDITION MAY STILL BE SUBJECT TO RESTOCKING/REPACKAGING FEES.**

**THE INSTALLATION OR USE OF ANY PRODUCT PURCHASED FROM S DIESEL INDICATES THAT BUYER HAS READ, UNDERSTANDS AND AGREES TO THE TERMS AND CONDITIONS OF THIS WARRANTY.**

### ASSIGNABILITY OF WARRANTY

This Warranty is for the exclusive benefit of Buyer and is not assignable.

### WARRANTY CLAIMS PROCEDURE

Warranty claim forms can be printed from the company websites (<http://www.drivendiesel.com> (Products) and <http://www.strictlydiesel.com> (Services)). A properly completed warranty claim form and a copy of the invoice for any defective Product or Service must be received by the Seller within the earlier of 30 days after the expiration of the Warranty Period or the incident giving rise to the claim. To qualify for an adjustment under this Warranty a defective Product must be returned prepaid to the Seller for inspection and must be accompanied by a dated proof of purchase receipt. In addition, the serial number of the defective Product, if any, must match the serial number on Buyer's invoice. All Warranty claims are subject to approval by the Seller and/or the Product's manufacturer. Buyer must pay all applicable service charges and taxes. Defective Products accepted for warranty compensation become the property of the Seller. To qualify for an adjustment under this Warranty a vehicle upon which S Diesel Services have been performed must be delivered to the Seller during Seller's hours of operation for inspection and must be accompanied by a dated proof of purchase receipt.

### WAIVER

Any failure of the part of S Diesel to insist on strict compliance with the Warranty Provisions shall no way constitute a waiver of such right. No claim or rights arising out of a breach of the Warranty Provisions by Buyer may be discharged in whole or in part by a waiver of the claim or right, unless the waiver is in writing signed by an authorized representative of S Diesel. S Diesel's waiver or acceptance of any breach by Buyer of any provisions of the Warranty Provisions shall not constitute a waiver of or an excuse for nonperformance as to any other provision of the Warranty Provisions nor as to any prior or subsequent breach of the same provision.

### APPLICABLE LAW

The Warranty shall be governed by the laws of the State of Arizona (excluding Arizona law with respect to conflicts of law).

\* Driven Diesel was formerly known as ITP Diesel, LLC and Sinister Diesel, LLC.